

Degree & Higher Education

Prospectus




Develop

your career



A Partner College of  
University of East Anglia



# Looking to get a real experience of what it's like to study as a Higher Education student?

---

**The COVID-19 pandemic means it's currently not possible to visit our campuses as part of our open events which means, at the time of publishing (autumn 2020), we are changing our series of open days and information evenings.**

---

## **Small group campus tours**

We will be running a series of pre-booked campus tours for small groups as soon as we're able to. These visits will take place in the early evening once students have left campus for the day.

Ideal if you're looking to visit our campuses, experience our great facilities and see what life is like as a student at our College.

To secure your place, register your interest at [ccn.ac.uk/he-visit](https://ccn.ac.uk/he-visit) and we'll be in touch as soon as we have confirmed dates available.

## **Virtual information events**

Get your questions answered and find out more detailed information about specific course(s) you're interested in and life at our College.

We'll be updating our list of events regularly. Find out more at [ccn.ac.uk/events](https://ccn.ac.uk/events) or [easton.ac.uk/events](https://easton.ac.uk/events)

## **Live Chat**

Learn more about our courses, get advice from our course advisers and check the status of your application by using the Live Chat function on our website.

---

We hope that we will be able to run our usual series of open days in the spring and summer of 2021. In the meantime, visit [ccn.ac.uk/events](https://ccn.ac.uk/events) or [easton.ac.uk/events](https://easton.ac.uk/events) to get the latest information on our upcoming events. We look forward to welcoming you back to our campus soon.



# About us...

Degrees awarded by



Over 1,000

Students study Degree & Higher Education courses at our College each year

World class learning

for Aviation Engineering students at

International AVIATION ACADEMY > NORWICH



Lower fees

Tuition fees start from £8,000 per year



Developed with employers

Our courses are designed to meet the latest industry and professional standards



Industry standard facilities

for agriculture, animal studies, aviation, equine studies and sport



Expert teaching

Our staff are experts in providing excellent academic and vocational teaching



Flexible study options

Courses run 1 or 2 days per week so you can fit your studies around your commitments





# Welcome

At our College we recognise that when it comes to Higher Education, a one-size-fits-all approach doesn't work for everyone.

Our Degree and Higher Education courses have one crucial difference to those you will find in many larger universities: our courses have been designed to fit your life and career aspirations.

.....

#### Higher Education students benefit from:

##### Specialist courses

We don't offer degrees in every subject area, just those where we have built up a strong area of expertise over many years. Our courses are taught by our expert lecturers, supported by superb links with employers and with access to industry standard facilities.

##### UEA validated programmes

Many of our courses are validated by UEA, so you know that a degree from City College Norwich is backed by a UK top 25\* and world top 200\*\* university.

##### Flexible study

Our flexible courses are designed to allow you to combine your studies with work and other commitments you may have as a parent or carer.

##### Expert professional tuition

All of our HE lecturers are experts in providing excellent academic and vocational teaching. They maintain close links with their sector, so that you benefit from learning that is relevant and fully up-to-date for your chosen career.

#### Great support

Another distinctive feature of our courses is our smaller class sizes. This ensures you get all the support you need throughout your course. A real benefit for students of our smaller, specialist community is that your lecturers are accessible to you and available to help when you need them.

#### A local and affordable option

The community at College is made up predominantly of local students from the Norfolk and Suffolk area, who are attracted to the benefits of studying close to home and the lower tuition fees that we are able to offer.

#### Come and visit us

Don't just take my word for it, come along and talk to us about our courses at our next Open Day. We'd love to see you and talk to you about how our Degree and Higher Education courses can take you to where you want to be.

**Corienne Peasgood OBE**  
Principal

\* The Times and Sunday Times Good University Guide 2020. \*\* Times Higher Education World University Rankings 2020





# Contents

## General information

Welcome	7	Fees & financial assistance	32
Our facilities	10	International students	34
Our campuses	14	How to apply	36
Student Accomodation	18	Entry requirements	37
Achieving your career goals	20	Access to Higher Education	94
Degrees developed with employer	22	Teacher Development	96
Your community	24	Norfolk Teacher Training Centre	98
Graduation	26	How to find us	100
Academic support	28		

## Courses

Agriculture	39
Animal Studies, Equine Studies & Wildlife and Conservation	51
Business Management	51
Chartered Management Institute (CMI) Courses	55
Construction & Engineering	63
Health & Community Studies	71
Humanities	81
Public Services	85
Sport	89

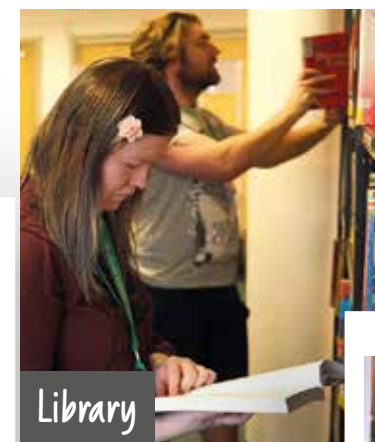
All information is correct at the time of print (October 2020). Visit [ccn.ac.uk](http://ccn.ac.uk) or [easton.ac.uk](http://easton.ac.uk) for the most up to date information.



# Our facilities



Cafes & restaurants



Library



Information Store



Learning Zone



Aviation Academy

Our Higher Education students enjoy having their own exclusive facilities at Norfolk House and Easton College.

Students study in a professional and relaxed environment with access to superb specialist facilities across our campuses.

This includes our Aviation Engineering students study at the world class International Aviation Academy Norwich.

Alongside this, students have access our main Ipswich Road campus (shared with our Further Education students).



Human Performance Lab



Students' Union



The Advice Shop



Social space





Golf Centre



Social space



Gym



Equine Centre



Farm



Sports facilities



Animal Management Centre

# Our campuses

**97%**  
of our graduates  
are in employment or  
further study,  
six months after  
their degree

TEF Metrics 2019, for CCN,  
published by Office for Students.

Our campuses provide outstanding learning environments.

You will study in specialist learning spaces that match the requirements of your course and provide the perfect environment for you to succeed.

All of our campuses are easily accessible, with City College Norwich located in the city centre, and Easton College and the International Aviation Academy just a few miles outside of Norwich.



## Norfolk House

Norfolk House is City College Norwich's School of Higher Education.

Located in the heart of the city centre, the campus contains modern classroom and seminar spaces, a library, computer facilities and social spaces. All facilities are exclusively for use by Degree and Higher Education students.

Norfolk House is easily accessible to all, with excellent public transport links within a short walking distance. For students who need to drive, there are several public car parks close by.

## Ipswich Road

The main City College Norwich campus on Ipswich Road is where you will find specialist, industry-standard training facilities to support your learning. It is a mixed campus, shared with our large body of further education students.

The diverse, dynamic and inclusive atmosphere on our main campus make it a great place to learn. Degree and Higher Education students have their own study space, the HE Learning Zone, and have full access to shared facilities including cafés, restaurants, a theatre and the college nursery.



“ Having such a great experience has renewed my interest in the education sector and has inspired me to consider pursuing a new career ”

**Brodie Elgood**  
FdSc Health Studies student







## Easton College

Set within 200 hectares of countryside, Easton College provides an outstanding learning environment for students.

The College contains specialist industry standard facilities for agriculture and landbased studies, animal studies, equine studies and sport, including an operational farm, equestrian centre and innovative animal management centre.

In addition to these specialist facilities, you will find dedicated learning spaces, a library and a range of cafes and restaurants.

Located just 8 miles outside of Norwich, the campus is easily accessible by public transport and has car parking for students who need to drive. There's also student accommodation located on site for students who travel from further afield or want to experience life as a residential student.

“ The degree lead to me far surpassing my personal expectations in regards to my academic achievements. ”

Zachary Burton  
Crime Terrorism & Global Security Graduate

## UEA Library

One of the key benefits of being a Partner College of UEA is that all our students are provided with a UEA campus card, giving access to the UEA Library and its extensive collections.



## International Aviation Academy Norwich



Our Aviation Engineering students hone their skills at the International Aviation Academy Norwich.

Located next to Norwich Airport, the Academy provides a world class learning environment. The first of its kind in the world, the Academy includes the Aviation Emulation Zone® where students work on live maintained aircraft.

Students have access to first class teaching facilities and well-equipped workshops which provide a motivating location for development of aviation skills. The Aviation Emulation Zone® offers a professional, industry standard experience for students working on a Boeing 737 aircraft.

## Eat, drink and relax

The College negotiates student discounts in nearby eateries, in addition to the many discounts available with your NUS card, to help you make the most of all that Norwich has to offer.

As soon as you step out of Norfolk House, you are in the heart of the city and within walking distance of a huge amount of cafes and restaurants.

At our Ipswich Road campus, you will find plenty of choice when it comes to places to eat, drink and relax. This includes our student run Debut Cafe, Starbucks, Costa Coffee and student restaurant, City Restaurant.

At Easton College there's plenty of cafes and restaurants for you to eat and drink. You can also get active in our gym and use our elite sports facilities, including our 3G pitches and LTA registered tennis centre.





# Student accommodation

Our Easton campus is home to welcoming student accommodation that allows you to develop your skills and grow in a friendly, safe and social community in Norfolk's stunning country landscape.



## En-suite rooms at Bradley Hall

We offer excellent and well maintained single en-suite accommodation for Degree and Higher Education students at Bradley Hall.

This standard of accommodation is perfect for those looking for a more homely feel to their experience complete with large open plan sitting and kitchen areas to socialise.

## What's included?

We want you to feel at home and relaxed in your own space which is why we encourage you to create your own spaces within your room to help you settle in and enjoy your favourite comforts from home.

All rooms are centrally heated at no extra cost and come complete with:

- bed and mattress (bedding, pillows and towels are not provided)
- desk and chair
- wardrobe
- hot and cold tapped sink
- plenty of storage space
- curtains
- waste paper basket
- a single vanity mirror and light
- good sized pin board for organisation.

Accommodation is let on a self catering basis for the academic year (35 weeks) but meals can be purchased from college catering outlets during term times.



## Facilities & activities

Alongside the standard accommodation facilities, we also offer all our residents a range of other facilities and services including:

- free Wi-Fi
- clothes washing and drying facilities
- fully fitted kitchens
- free parking
- a team of Residential Assistants to support with your needs

When you're not studying, we have some excellent facilities to keep you active and entertained including our Tennis Centre, gym and fitness centre and 3G pitch. We also offer free daily activities and trips away to fun places including paintballing, go karting, swimming, football, tennis, basketball, cooking, film nights and city trips.

To find out more about our student accommodation options and full pricing information for our Degree and Higher Education students, visit [easton.ac.uk/HE-accommodation](http://easton.ac.uk/HE-accommodation)





# Achieving your career goals



We specialise in Degree and Higher Education courses that are geared towards employment and your career progression, whether that's within the sector where you are already working or to enable you to make a career change.

In fact, a large proportion of our degree level students are already in work. That's why our courses are designed to allow our students to combine work and study.

## Courses designed with employers

We work closely with employers to ensure that our degree level courses equip you with the knowledge and skills you need to be employed and advance within your chosen industry or sector.

## Progress to the next level

The vast majority of our students have clear career related goals and progression in mind. That's why our degree level courses are explicitly designed to make sure you can achieve this.

The Destinations of Higher Education Leavers (DLHE) survey confirms that our students are successful in achieving this: 97% of full time graduates are in employment 6 months after completing their programme with us. 100% of part time graduates are in highly skilled employment or further study 6 months after completing their degree. This is taken from the TEF (Teaching Excellence and Student Outcomes Framework) Year 4 – Published by the Office for Students, January 2019.

This places us in the top 10% nationally and, although not captured by the DLHE survey, we know that in many instances our graduates progress on to higher level roles with more responsibility and increased opportunities for further career progression.

*“ My course helped me develop professional networking skills and useful language to use in a business environment. These networks helped to connect me with relevant industry bodies which helped my progression in my chosen field ”*

**Veronique Ananou**  
Assistant Restaurant Manager at Barnham Broom Hotel and Spa. Hospitality and Events Management Graduate (2018).



# Degrees that work for you



Our courses are designed to ensure you develop the most up to date knowledge and skills that are highly valued by today's employers.

Alongside this, we also aim to provide you with the flexibility you need to balance your studies with work and family commitments.

Here are just some of the ways our courses have been designed to ensure you can fit your studies around your life and achieve your career goals.



## Developed with employers

Our courses are developed with employers and are designed to meet the latest industry and professional standards. Where relevant, our courses may also include opportunities for you to gain specific professional qualifications or professional accreditation to be able to practice within your chosen field.

The fact that many employers actively support their employees to study on our degree level courses, including contributing towards the costs, is a real endorsement of their relevance and value for career development and progression.



## Degrees that fit around your life

Our courses are designed to fit around your life and career aspirations. You can study most courses over 1 or 2 days per week, meaning you can continue to work alongside your studies and balance other commitments.



# Your community

Partner College  
of University  
of East Anglia



When you join our College, you become part of a vibrant and welcoming community.

This provides you with the support you need to succeed, but also allows you to make friends and build lasting memories.

### Exclusive facilities

Our Higher Education students have exclusive access to City College Norwich's School of Higher Education, Norfolk House. There are also a range of facilities at Easton College and at our Ipswich Road campus that are for the exclusive use of our Higher Education students. This creates a real sense of community and a hub of activity for students.

### Students' Union

Run by students, for students, our Students' Union (SU) is here to help you with your studies and make the most of your time at our College. As a member of the SU, you will have access to clubs and societies, discounts, local offers and much more. You will also have opportunities to get more involved in college life by taking on roles such as Executive Officer, Class Representative and the Student Governor position or taking part in fundraisers, events, band nights and club nights. You can also feedback your suggestions on how to improve the overall student experience through our HE Student Forum.

### At the centre of it all

Located in the heart of the city, Norfolk House gives you access to the best of Norwich's thriving shopping, dining, entertainment and culture scene.

Easton College is easily accessible from Norwich city centre and set in 200 hectares of picturesque countryside.

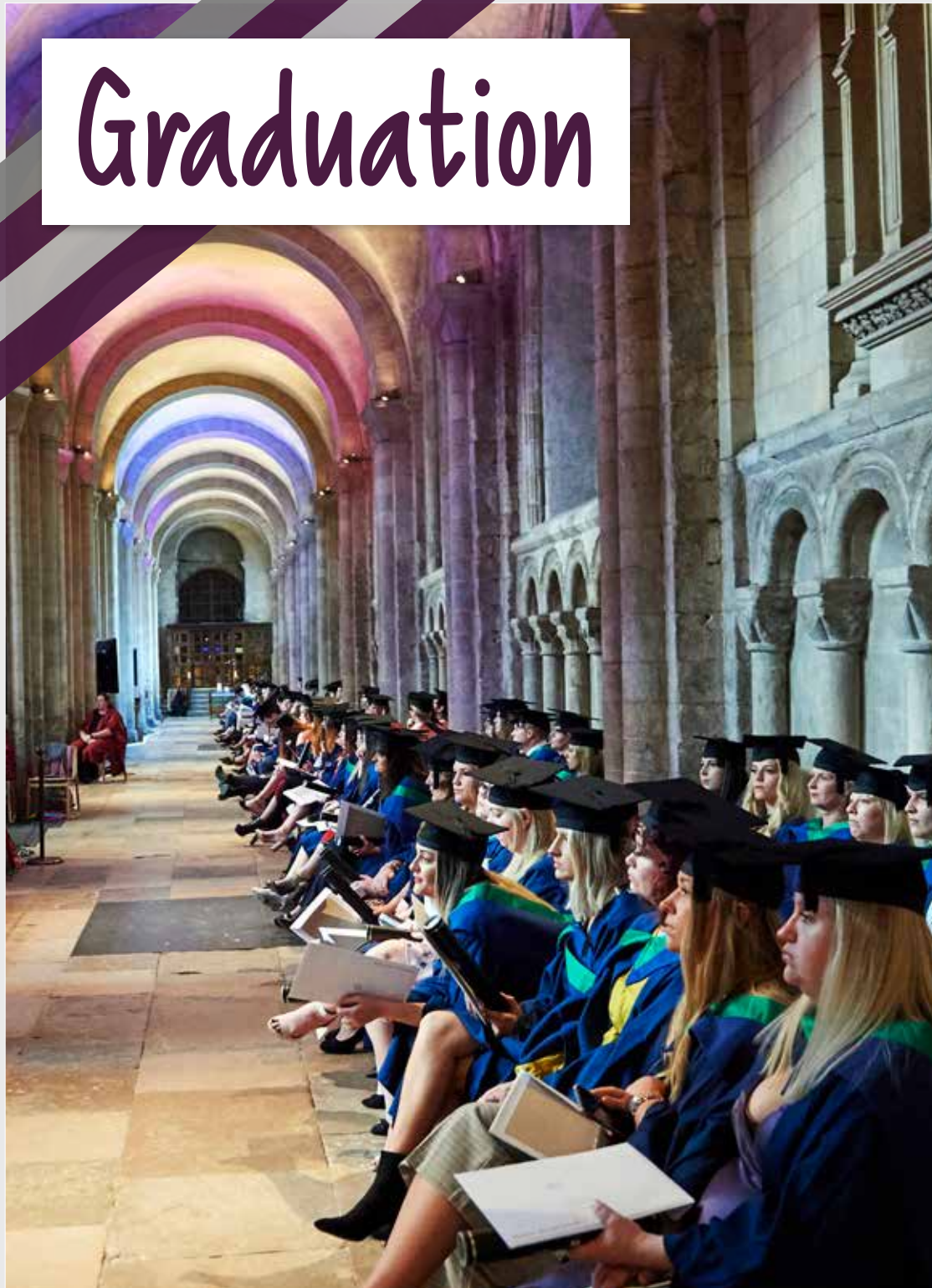
### Making your voice heard

You will have lots of opportunities to share your views and help ensure that we provide the very best experience for our students. This includes getting involved in course committees, taking part in student forums and representing your course.





# Graduation



On successful completion of your degree level course, you will be invited to attend our annual graduation ceremony which takes place at Norwich Cathedral.

Our graduation ceremonies are the perfect way for you to celebrate your hard work and achievements with close friends and family in one of Norfolk's most iconic and historic landmarks.

We look forward to celebrating with you at one of the most special events in the college's calendar.





# Academic support

**Top 10%**  
 of all providers nationally for our graduates being in employment or further study, 6 months after completing their degree

TEF Metrics 2019, for CCN, published by Office for Students.

At City College Norwich you will be provided with all the support you need to succeed on your course.

We pride ourselves on providing an exceptional level of academic support to our students. Our lecturing staff are accessible, helpful and, above all, committed to ensuring that you have the best possible learning experience.

## Exclusive learning facilities

As a Higher Education student, you will have access to our Information Store which has over 80,000 books, hundreds of journal titles, and access to millions of Journal articles, computer study and a wealth of resources to help with study skills like essay writing, numeracy, note taking, computing and more. Alongside this, you will have exclusive access to our Norfolk House library, the Higher Education Learning Zone on the Ipswich Road campus and the Easton College Library.

Because we are a UEA Partner College, you will also have 24/7 access to the library facilities at UEA where you can use your UEA campus card to borrow from the physical collections.

## Dedicated tutor support

You will have a tutor who will provide you with essential help, support or advice on a wide range of areas both in and outside of college to ensure succeed in your learning. Our smaller class sizes allows our tutors to have a better opportunity to get to know you properly and to take a real interest in your academic achievements and overall welfare.

## Tracking your success

You and your lecturer will be able to stay fully up to date with your progress throughout your course with our Achievement Tracking System (ATS). This system allows you to submit assignments online, keep on top of your work with individual assignment work schedules and access marks, feedback and assessment grades online.

## Expert careers guidance

Our Advice Shop offer expert careers advice and guidance to help you decide on your next steps and specialist support in career development, CV writing and interview skills. Our friendly and impartial careers advisers are available in the Advice Shop on the Ipswich road campus with support available across all our campuses.





# Academic support

## Higher Education for all

Our students come from a variety of backgrounds and are a range of ages.



*“ I always receive support and feedback when I need it. ”*

Karen Seaward, Psychology student



### Wellbeing

Our Wellbeing Team offer private and confidential support about any aspect of health or wellbeing. You can talk to an adviser or make use of the wealth of resources in the Wellbeing Zone. This service is friendly, discreet and non-judgemental and is based in the Information Store on the Ipswich Road campus with support available across all our campuses.

### Childcare options

The College has its own Nursery (on the Ipswich Road campus) which offers childcare for 0 to 4 year olds, with the option of term-time only or year-round places.

The Nursery is popular and places are subject to availability. For more information, contact the Nursery Manager on **01603 773 121**.

### Students with disabilities or additional learning needs

#### Disabled Students Allowance

If you have a learning difficulty, disability, mental health difficulty or long-term condition that could affect your studies, you may be entitled to additional support.

You can apply for DSA (Disabled Students' Allowance) to fund any additional support which you should apply for as soon as you have been offered a place on your chosen course. The process can take up to several weeks, especially during peak times.

To find out what you're entitled to, contact our DSA Specialist Adviser on **01603 773 439** or **inclusivelearning@ccn.ac.uk** for more information.

#### Campus access guides

If you have access requirements, you can find comprehensive guides to the accessibility of our sites and facilities at **AccessAble.co.uk**. You can use the AccessAble App which is available free on iOS and Android.



Visit [ccn.ac.uk/HEfinance](https://ccn.ac.uk/HEfinance)

You can also contact our Finance Advisers on **01603 773 773** or [financialadvice@ccn.ac.uk](mailto:financialadvice@ccn.ac.uk)

**Higher fees courses:**

- BSc (Hons) Professional Aviation Engineering Practice
- BSc (Hons) Agriculture (Top-Up)
- BSc (Hons) Animal Science and Welfare (Top-Up)
- BSc (Hons) Land Based Sciences (Ecology/Equine) Top-Up
- BSc (Hons) Zoology
- FdSc Agricultural Management
- FdSc Animal Science and Welfare
- FdSc Equine Science and Welfare
- FdSc Wildlife and Conservation.

# Fees & financial assistance

**Full time students**

The cost of our full time FdA, FdSc, BA (Hons) & BSc (Hons) courses is £8,000 per year except for our higher fees courses (listed opposite) which are £9,000 per year.

**Part time students**

To study our FdA, FdSc, BA (Hons) & BSc (Hons) courses part time (based on 60 credits being attempted per academic year), our fees are £4,000 per year except for our higher fees courses (listed on page 32) which are £4,500 per year.

Our HNC and HND courses can be studied part time our fees are £750 per 15 credit module.

**International Students**

The cost of a full time Higher Education course is £11,500 per year.

Please note the BSc (Hons) Professional Aviation Engineering Practice will cost £13,125 for the 2020/21 academic year.

If studying on a HND programme, the fee will be £900 per 15 credit module.

**See page 34 for more information.**

**For HNC and HND courses, there is an additional registration fee of £206 for HNC and £262 for HND in first year and a £21 annual registration fee in each subsequent year.**

**Student loans**

You may normally be eligible for a tuition fee loan from Student Finance England to cover the cost of fees. There may also be maintenance loans available depending on your circumstances. Student loans do not have to be paid back until after you complete your course and you are earning at least £26,575.

If you have dependent children you may be eligible for other help such as a Parents' Learning Allowance or a Childcare Grant. If you are disabled, you may be eligible for the Disabled Students' Allowance.

Find out more: [gov.uk/student-finance](https://gov.uk/student-finance)

**Other financial support**

There is a wide variety of additional financial support available during your studies including Disability Student Allowance or Council Tax Exemption. We also offer a limited HE Hardship Fund for certain groups of students facing financial pressure or unexpected costs.

For one to one advice contact our Finance Advisers on **01603 773 773** or [financialadvice@ccn.ac.uk](mailto:financialadvice@ccn.ac.uk)



# International Students



International students can apply for courses listed with this icon.

## Information & Advice

The British Council website [educationuk.org](http://educationuk.org) and UKCISA – the UK Council for International Student Affairs [ukcisa.org.uk](http://ukcisa.org.uk) both provide free information and advice about programmes, visas, immigration, finance and fees.

It is also recommended that you visit our website: [ccn.ac.uk/courses/international-students](http://ccn.ac.uk/courses/international-students) where you will find the latest up to date information about living and studying in Norwich, including the College's International Student Prospectus, programme fees and visa information.

Alternatively, you may contact the International Team on:

From the UK  
t: 01603 773 483

From outside the UK  
t: +44 1603 773 483

e: [international@ccn.ac.uk](mailto:international@ccn.ac.uk)



Coming to live and study in the UK can be an enriching experience and the College works hard to make you feel at home.

Norwich is a vibrant and cultural city in which to live, learn and work and the College is proud of the supportive community that it has created.

International students from all over the world have been coming to the College to study for over 30 years. Our College is known for its friendly atmosphere and its supportive staff.

To make the experience as rewarding and enjoyable as possible, we have a dedicated International Team who can help with your choice of course, application and immigration procedures. While here in Norwich and studying at our College, our International Team will take a keen interest in your welfare, helping with visa renewals, fees and other financial matters, and any personal issues or support you may need.

## Visas

Please note that if you require a student visa to study in the UK you must study on a full time basis.

To find out if you need a visa go to: [gov.uk/check-uk-visa](http://gov.uk/check-uk-visa)

## Languages

All of the teaching and assessment on our HE programmes are conducted in English. Any applicant whose first language is not English should be able to demonstrate sufficient competence and ability to take instruction in English. We will look for a IELTS Academic/SELTs (Secure English Language Test) score of 6.0 with a minimum of 5.5 in each element or equivalent as a minimum entry requirement.

## International Student Fees

For Tier 4 students, before a Confirmation of Acceptance for Studies (CAS) will be issued, you will need to pay the first year's fees for your course (for Bachelor Degree students) or the entire course fee (for the Access to HE Diploma). If a student visa application is refused by the UKVI, we will retain a £250 administration fee.

# How to apply

## Full time courses

Applications for undergraduate courses must be made online via UCAS at [ucas.com](https://ucas.com). You will be directed to the UCAS online application from each course listed at [ccn.ac.uk/degrees](https://ccn.ac.uk/degrees)

City College Norwich institution code is N82. Easton College institution code is E30. The course code will depend on the course you are applying for.

Full details of your chosen course can be found in the course listings.

## Degree Apprenticeships

Visit [ccn.ac.uk/apprenticeships](https://ccn.ac.uk/apprenticeships) for available opportunities and apply direct with the employer.

## Higher National Diploma/ Certificate (HND/C) and Access to Higher Education

Apply directly at [ccn.ac.uk](https://ccn.ac.uk) or [easton.ac.uk](https://easton.ac.uk)

## Progression to Honours Degree

Apply via UCAS unless you are already studying on an HND or Foundation Degree at City College Norwich.

Apply directly at [ccn.ac.uk](https://ccn.ac.uk) or [easton.ac.uk](https://easton.ac.uk)

## NHS employees

If you are an NHS employee who is applying for Health Studies, speak to your Training Manager. Your application will be made through your Training Manager.

# Entry requirements

Contact our Advice Shop advisers on **01603 773 773** from the UK, or on **+44 1603 773 773** from the rest of the world for help with your entry point into Higher Education at City College Norwich.

## Qualifications

You will usually need to be aged 18 or over and have obtained (or be in the process of obtaining) an appropriate qualification and sufficient UCAS points for the course you are applying for. The College is committed to providing a higher level progression route for all of its Level 3 further education programmes. As a general guide, the most commonly acceptable qualifications are as follows:

- A and AS Levels
- BTEC National Diplomas/Certificates
- An Access to Higher Education Diploma
- Qualifications equivalent to the above.

If you already hold an HND, HNC or Foundation Degree qualification you may be eligible to enrol on one of our articulated progression route programmes and begin working towards a BA or BSc Honours Degree.

For details of the UCAS tariff points system visit [ucas.com](https://ucas.com)

## Interview

While many programmes will insist on some specific entry qualifications or other criteria (such as passing a written English test), applicants may be offered an interview to determine motivation and commitment to the programme.

## Mature students

Many of our mature students come to City College Norwich after a break from education; some have few, if any, formal qualifications, but this is not necessarily a barrier. In these circumstances we take the time to assess whether the applicant has sufficient relevant experience that we could consider to be equivalent to the qualifications needed.

## Access to HE

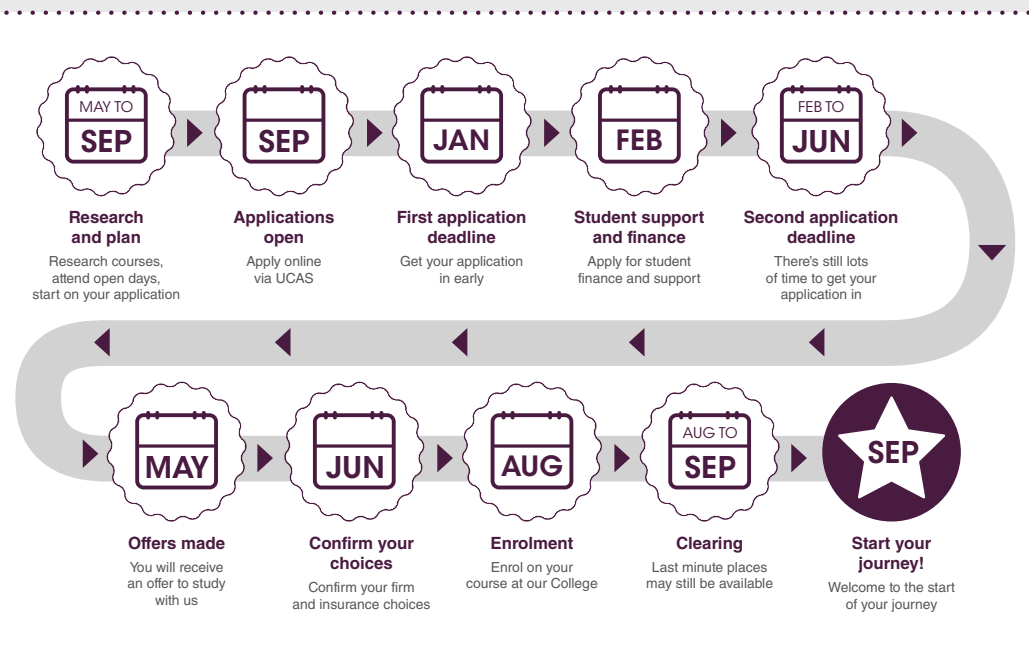
Access programmes are an alternative to traditional entry qualifications and provide excellent preparation for students who wish to move on to HE programmes. Evidence shows that students who take this route do well.

Full details of our Access programmes can be found on **page 62** of this prospectus.

## Recognition of Prior Experiential Learning (RPEL)

If you have gained qualifications at an appropriate level that are relevant to the programme or have relevant experience gained in a work based or vocational setting, you may be given credit, and possibly exemption, from certain elements of the programme.

Claims for RPEL must be made and resolved before joining a programme, so be sure to ask at your interview if you think this could apply to you.







# Agriculture

---

BSc (Hons) <b>Agriculture (Top up)</b>	40
FdSc <b>Agricultural Management</b>	41

# BSc (Hons) Agriculture (Top up)

**COURSE CODE:** D402

**DURATION:** 1 YEAR  
2-3 DAYS PER WEEK

**APPLY VIA:**  
easton.ac.uk/degrees

**DELIVERED AT:**  
Easton College

## About you

You should have a minimum of 240 UCAS points (120 at Level 4 and 120 at Level 5) or an equivalent HND qualification in a suitable subject area. Applications from students whose first language is not English are welcome.

## About the course

This course has been designed to further develop the knowledge established during a relevant Foundation Degree and is ideal for those who are currently working in agriculture or who want to combine study with structured employment in the sector. This will allow you to gain relevant experience, apply your experience to your academic studies and continue to earn a salary.

## What you will learn

You will focus on a broad range of topics including Advanced Sustainable Agronomy, Sustainable Livestock Management, Advanced Business Management and Global Agriculture. The course is delivered through workshops, lectures, seminars, practical sessions, tutorials and self-directed study. You will be expected to build upon the content of lectures and seminars with group and peer discussion.

## You can go on to do

Successful completion of this course will help you progress on to a career in the industry by entering employment or graduate internships in a range of careers including agronomy, food production, farm business management, research, data analysis, agricultural engineering, freelance and contract farming. You can also progress on to postgraduate study in related fields.

This course is subject to re-validation during the 20/21 academic year and therefore the details above may change.

# FdSc Agricultural Management

**COURSE CODE:** E3015-2

**DURATION:** 2 YEARS  
2-3 DAYS PER WEEK

**APPLY VIA:**  
easton.ac.uk/degrees

**DELIVERED AT:**  
Easton College

## About you

You will need a minimum of 64 UCAS points from A Levels or equivalent and GCSE Maths, English and Science at grade 4/C or above or equivalent. Applications from students whose first language is not English are welcome.

## About the course

Agricultural Management involves the overseeing of all aspects of running a farm and other related facilities. This foundation degree will provide you with the vocational skills required to operate at a management or supervisory level within a rapidly restructuring industry. The course is designed to combine theory and research with work placement and practical skills which will allow you to apply your knowledge and skills in an industry setting.

## What you will learn

You will focus on a broad range of topics including livestock production, applied agricultural science, practical land based skills and food production industry.

This course is subject to re-validation during the 20/21 academic year and therefore the details above may change.

You will learn through a variety of activities and events such as practical work, group activities, lectures, workshops, problem solving activities, tutorials, e-learning seminars, external visits and guest speakers.

You will be expected to arrange up to 100 hours of work experience in a subject specific area in each year of this course.

## You can go on to do

Successful completion of this course will allow you to progress on to the BSc (Hons) Agriculture Top Up degree. You can also progress on to a career in the industry. Past graduates have been employed within Young Farmers, dairy farming, farm contracting, farm management and lecturing.





# Animal Studies, Equine Studies & Wildlife and Conservation

---

BSc (Hons) <b>Animal Science &amp; Welfare (Top up)</b>	44
BSc (Hons) <b>Land Based Sciences (Top up)</b>	45
BSc (Hons) <b>Zoology</b>	46
FdSc <b>Animal Science &amp; Welfare</b>	47
FdSc <b>Equine Science &amp; Welfare</b>	48
FdSc <b>Wildlife &amp; Conservation</b>	49

---

# BSc (Hons) Animal Science & Welfare (Top up)

**COURSE CODE:** D900

**DURATION:** 1 YEAR  
2 DAYS PER WEEK

**APPLY VIA:**  
[easton.ac.uk/degrees](http://easton.ac.uk/degrees)

**DELIVERED AT:**  
Easton College

## About you

You should have a minimum of 240 UCAS points (120 at Level 4 and 120 at Level 5) or an equivalent HND qualification in a suitable subject area. Applications from students whose first language is not English are welcome.

## About the course

This course has been designed to further develop the knowledge established during a relevant Foundation Degree and is ideal for those who are looking to refine their skills and knowledge in preparation for employment or further postgraduate study.

## What you will learn

This course allows you to combine a major project or dissertation of your choice with optional modules such as Conversation Biology, Comparative Animal Nutrition, The Global Business Environment and Advanced Canine & Feline Behaviour & Training. The course is delivered through lectures, presentations, seminars, tutorials and self-directed specific study. You will be expected to build upon the content of lectures and seminars with group and peer discussion.

## You can go on to do

Successful completion of this course will help you progress on to a career in the industry by entering employment or graduate internships in a range of careers by working with local, national or international charities, laboratories, animal nutrition companies and zoological societies or working in roles training animals or consulting on animal behaviour. You can also progress on to postgraduate study in related fields.

# BSc (Hons) Land Based Sciences (Top up) (Ecology/Equine)

**COURSE CODE:** D901

**DURATION:** 1 YEAR  
2 DAYS PER WEEK

**APPLY VIA:**  
[easton.ac.uk/degrees](http://easton.ac.uk/degrees)

**DELIVERED AT:**  
Easton College

## About you

You will need 240 HE credits (120 at Level 4 and 120 at Level 5) or equivalent HND qualifications in a suitable subject area and a successful interview.

Mature students will be considered subject to demonstrating sufficient work and learning experience which will be discussed at the interview stage.

Applications from students whose first language is not English are welcome.

## About the course

This course has been designed to further develop the knowledge established during a relevant Foundation Degree. In order to meet industry needs and focus on growing careers, this course has been designed to allow you to work part-time alongside your studies.

## What you will learn

You will have the opportunity to explore developments in land based sciences alongside optional modules such as the global business environment, advanced methods and techniques in ecology, horse and rider biomechanics and conversation biology. The course is delivered through workshops, lectures, seminars, practical sessions, tutorials and self-directed study. You will be expected to build upon the content of lectures and seminars with group and peer discussion.

## You can go on to do

Successful completion of this course will help you progress on to a career in the industry by entering employment or graduate internships in a range of careers such as ecological consultancy, working for conservation charities, Natural England, equine behaviour, equine rescue and rehabilitation. You can also progress on to postgraduate study in related fields.



# BSc (Hons) Zoology

**COURSE CODE:** E3100-3

**DURATION:** 3 YEARS  
2-3 DAYS PER WEEK

**APPLY VIA:**  
easton.ac.uk/degrees

**DELIVERED AT:**  
Easton College

## About you

You should have a minimum of 96 UCAS points from A Levels or equivalent and GCSE Maths and English at grade 4/C or above or equivalent. Applications from students whose first language is not English are welcome.

## About the course

Zoology incorporates the study of biology, ecology and biodiversity in order to better help manage and conserve the Earth's fragile ecosystems. This course will provide you with the practical and theoretical knowledge to approach a variety of contemporary challenges affecting the Earth locally, nationally and globally.

## What you will learn

You will focus on a broad range of topics including animal anatomy and physiology, principles of biological science and genetics, global biodiversity, vertebrate zoology, invertebrate zoology, contemporary issues in zoology and British wildlife, surveys and identification.

The course is delivered through lectures, demonstrations, presentations, seminars, practical sessions, tutorials and self-directed specific study. Practical classes in the laboratory and/or field will allow you to practice project management, data gathering and handling and interpretation skills.

## You can go on to do

Successful completion of this course will help you progress on to a career in the industry by entering employment or graduate internships in a range of roles such as entomologist, marine scientist, environmental consultancy and field trials officer or by working within zoological collection, research or conservation roles. You can also progress on to postgraduate study in related fields.

# FdSc Animal Science & Welfare

**COURSE CODE:** E3061-2

**DURATION:** 2 YEARS  
2-3 DAYS PER WEEK

**APPLY VIA:**  
easton.ac.uk/degrees

**DELIVERED AT:**  
Easton College

## About you

You will need a minimum of 64 UCAS points from A Level or equivalent and GCSE Maths, English and Science at grade 4/C or above or equivalent. Applications from students whose first language is not English are welcome.

Experience of working in the Animal Care or Veterinary Industries is desirable, but, not essential.

## About the course

This course will provide you with the fundamentals of animal science training, development and management. You will develop skills, knowledge and practical experience in animal behaviour, physiology and care including the interaction and importance of animals in society and welfare management. You will also undertake real life work experience that will allow you to put the skills and theoretical knowledge you learn in college in to practice.

## What you will learn

You will focus on a broad range of topics including fundamentals of animal nutrition, core animal husbandry skills and diversity and evolution with the option of studying either human and animal interactions or zoo animal management.

You will learn through a variety of activities and events such as practical work, group activities, lectures, workshops, problem solving activities, tutorials, e-learning seminars, external visits and guest speakers.

You will study 14 hours per week and will undertake 100 hours of work experience during each year of the course. You are also be expected to complete independent study and research during the rest of the week.

## You can go on to do

Successful completion of this course will allow you to progress on to the BSc (Hons) Animal Science and Welfare (Top-Up) course or our BSc (Hons) Land-based Sciences (subject to meeting entry criteria/and module combinations).

You can also progress on to employment or graduate internships in a range of careers by working with local, national or international charities, laboratories, animal nutrition companies and zoological societies or working in roles such as training animals or consulting on animal behaviour.

# FdSc Equine Science & Welfare

**COURSE CODE:** E3090-2

**DURATION:** 2 YEARS  
2-3 DAYS PER WEEK

**APPLY VIA:**  
easton.ac.uk/degrees

**DELIVERED AT:**  
Easton College

## About you

You will need a minimum of 64 UCAS points from A Levels or equivalent and GCSE Maths, English and Science at grade 4/C or above or equivalent. Applications from students whose first language is not English are welcome.

## About the course

This course will provide you with the fundamentals of equine training, development and management. Combining practical skills with scientific and theoretical knowledge, this qualification will provide you with the essential experience you need for working in the equine industry.

## What you will learn

You will develop the skills, knowledge and practical experience needed to work in the equine industry, including yard and estate management. You will study biomechanical effects of exercise and injuries and will also be required to apply your scientific knowledge in a practical context to the development of the performance horse.

You will also gain experience in the management of equine breeding stock and commercial stud practice.

You will learn through a variety of activities and events such as practical work, group activities, lectures, workshops, problem solving activities, tutorials, e-learning seminars, external visits and guest speakers.

You will also be expected to arrange up to 100 hours of work experience in a subject specific area in each year of this course.

## You can go on to do

Successful completion of this course will allow you to progress on to the BSc (Hons) Land-Based Sciences (Equine) course. You can also progress on to a career in the industry in areas such as event management, coaching and teaching, research, yard management, equine nutrition, saddlery, training of sports horses, equine rehabilitation or freelance work.

**This course is subject to re-validation during the 20/21 academic year and therefore the details above may change.**

# FdSc Wildlife & Conservation

**COURSE CODE:** E3016-2

**DURATION:** 2 YEARS  
2-3 DAYS PER WEEK

**APPLY VIA:**  
easton.ac.uk/degrees

**DELIVERED AT:**  
Easton College

## About you

You will need a minimum of 64 UCAS points from A level or equivalent and GCSE Maths, English and Science at grade 4/C or above or equivalent. Mature students with life experience in professional or semi-professional work will be considered if they are able to demonstrate that they will be able to benefit from the course through interview and an interview essay task.

Applications from students whose first language is not English are welcome. Previous experience or qualifications in conservation are desirable, but, not essential.

## About the course

This course will equip you with the necessary knowledge and skills to prepare for a future career in Conservation Management. There is a balance between science, management and work based skills which reflects the needs of the conservation industry. You will undertake work based learning modules to develop hands on and practical knowledge. Fieldwork will be an important component of this course and the college has a range of habitats within our estate which will complement other local sites of ecological interest.

## What you will learn

You will focus on a broad range of topics including introduction to British habitat management, principles of biology and genetics, behavioural ecology, countryside recreation and outdoor learning and marine and coastal ecology. You will learn through a variety of activities and events such as practical work, group activities, lectures, workshops, problem solving activities, tutorials, e-learning seminars, external visits and guest speakers.

## You can go on to do

Successful completion of this course will allow you to progress on to the BSc (Hons) Land Based Sciences (Ecology Pathway) (subject to meeting entry criteria). You can also progress on to a career in the industry in roles such as wildlife rangers/wardens, ecological consultancy and education officers or by working with trusts in a variety of positions including research and site development and environmental planning.





# Business Management

---

BA (Hons) **Business Management**

52

# BA (Hons) Business Management

## YOU MAY BE ABLE TO SPECIALISE IN THESE PATHWAYS:

- ACCOUNTING & FINANCE
- MARKETING & DIGITAL COMMUNICATIONS

**COURSE CODE:** N102

**DURATION:** 3 YEARS  
2 DAYS PER WEEK

**APPLY VIA:**  
[ccn.ac.uk/degrees](http://ccn.ac.uk/degrees)

**DELIVERED AT:**  
City College Norwich



**Applications from international students welcome**

## About you

You will need a minimum of 48 UCAS points from A level or equivalent. Other criteria, such as relevant work experience, will be considered and assessed at interview. Mature students with life experience in professional or semi-professional work will be considered if they are able to demonstrate that they will be able to benefit from the course. This will be assessed at interview.

Applications from students whose first language is not English are welcome. For International students we require evidence of proficiency in English (including writing, speaking, listening and reading); the required minimum is IELTS Academic (SELT) 6.0 overall (minimum 5.5 in all components).

## About the course

This course offers a comprehensive insight into business management and is a widely recognised qualification in the workplace. This programme will equip you with the skills and strategies to deal with contemporary challenges in business, marketing and finance. The programme has been developed in consultation with local businesses and professional bodies.

The course is delivered through lectures, demonstrations, presentations, seminars, group work, simulations and case studies. Seminars give the opportunity for detailed discussion of a topic under the direction of a tutor. Delivery will take place at college over two days each week. Opportunities will also be provided to visit businesses and meet and work with entrepreneurs and business leaders.

## What you will learn

In your first and second year you will study subjects such as digital marketing, social and business enterprises, financial resources, project management, HR managing people and consumer behaviour (marketing).

In the second year of this degree you may be able to choose a specialist route depending on the career direction you wish to take. Pathways include Marketing and Digital Communications, Accounting and Finance, Hospitality, Tourism and Event Management (subject to demand).

Examples of subjects offered within each pathway are:

- **Marketing and Digital Communications:** Digital marketing and communications, consumer behaviour, data driven marketing, digital marketing innovation and automation.
- **Accounting & Finance:** Financial reporting, credit management and financial management.
- **Hospitality:** Hospitality service operations management and sustainable development in hospitality, tourism and events.

## You can go on to do

Our former students enjoy careers in a wide variety of professions including marketing, banking, human resource management, accounts and finance, financial services, management and teaching. In addition, students have entered the public services, national government, local charities, started their own business or masters level study or PhD Research.

**The course pathways are subject to student numbers. Please contact the course team for more information.**







# Chartered Management Institute Courses

---

<b>CMI Management Degree Apprenticeships</b>	<b>57</b>
<b>Level 5 Operations/Departmental Manager Degree Apprenticeship</b>	<b>58</b>
<b>Chartered Manager Degree Apprenticeship</b>	<b>60</b>

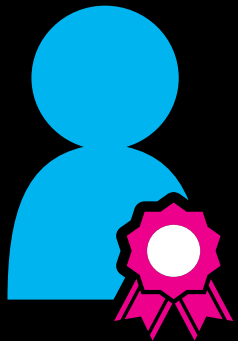
---



## THE AGE OF APPRENTICESHIPS.

The perfect alternative to traditional degree level study.

Degree apprenticeships allow you to study a degree level qualification as part of your job. On completion of the Chartered Manager Degree Apprenticeship, you will also have the option to apply for Membership of the Chartered Management Institute (CMI) to help further enhance your career.



# 83%

say they are better managers after achieving chartered status

Findings taken from Mapping Management Excellence: Evaluating the impact of Chartered Manager, May 2015

# £391,443

A Chartered Manager's average added value to their organisation

These results are achieved in many different ways

<b>80%</b> new product development	<b>62%</b> better people management	<b>73%</b> exceeding targets	<b>86%</b> improving operations	<b>64%</b> significant savings
---------------------------------------	--	---------------------------------	------------------------------------	-----------------------------------

Findings taken from Mapping Management Excellence: Evaluating the impact of Chartered Manager, May 2015

# CMI Management Degree Apprenticeships

City College Norwich offers the following Chartered Management Institute (CMI) Degree Apprenticeships:

- Chartered Manager Degree Apprenticeship
- Operations / Departmental Manager Higher Apprenticeship

CMI qualifications are valued by employers and are a great way to progress your career.

**Progress your career**

- Over 85% of managers agree that their CMI management and leadership qualification improved their performance and by transferring their new skills to the work place, almost all have seen a vast improvement in their team's performance too.
- 78% of employers agree that CMI qualifications provide quality assurance for customers and that the benefits outweighed the time, money and effort invested in obtaining them.
- More than 80% of managers say that taking a CMI management qualification has resulted in increased professional recognition, with most stating that employers prefer qualified managers when recruiting.
- This was confirmed by a further 53% advising that their CMI qualification had helped them in gaining a promotion.

My City College Norwich journey:

## Lynne

Studied: BA (Hons) Leadership Management Degree Apprenticeship



**Lynne is the Clinical Operational Manager for a community nursing and therapy team, having previously worked as a qualified physiotherapist within the NHS. She chose to do the degree apprenticeship to support her decision to specialise in management.**

"I've done a few courses that have been in-house, but I don't actually have that management qualification. I've learned a lot along the way that I would like to consolidate more formally within a degree setting. The fact that I will have the opportunity to apply for Chartered Management status attracted me to the course as well."





Applications  
from international  
students welcome

# Operations/ Departmental Manager Higher Apprenticeship Level 5

## About you

An Operations/Departmental Manager is someone who manages teams and/or projects, and works to achieve operational or departmental goals and objectives, as part of the delivery of the organisation's strategy.

They are accountable to a more senior manager or business owner. Working in the private, public or third sector and in all sizes of organisation, specific responsibilities and job titles will vary, but the knowledge, skills and behaviours needed will be the same.

Key responsibilities may include creating and delivering operational plans, managing projects, leading and managing teams, managing change, financial and resource management, talent management, coaching and mentoring.

## About the course

To gain the knowledge and skills required for the Operations/Departmental Manager Higher Apprenticeship the Apprentice will complete the CMI Level 5 Diploma in Management and Leadership in partnership with the Chartered Management Institute (CMI).

This Apprenticeship requires the Apprentice to complete an End Point Assessment, leading to membership of the CMI. During the programme, the principle methods of teaching and learning will be lectures, demonstrations, presentations, seminars, group work, case studies and self study.

## What you will learn

This programme will equip you with the skills and strategies to deal with contemporary challenges in management practice. It has been developed in consultation with local partners and professional bodies.

The emphasis on application of management and leadership skills means that this is a vocational and academic programme and will enable Apprentices to both ground their learning in the workplace and to reflect on work practice in an academic context.

You will study and apply skills in the following areas: operational management; project management; finance; leading and managing people; building relationships; communication; awareness and management of self and decision making.

## You can go on to do

On completion, Apprentices can register as full members with the Chartered Management Institute and/or the Institute of Leadership and Management, and those with 3 years of management experience can apply for Chartered Manager status through the CMI.

This well recognised qualification will enhance your ability to contribute effectively to your organisation and thus the possibility of progression into and through supervisory and management roles.

## CREATING CONFIDENT LEADERS

**92%**  
report greater  
self-awareness

**90%**  
have improved  
self-confidence

**96%**  
showcase  
continual growth

**96%**  
lead people and  
manage change

Findings taken from Mapping Management Excellence: Evaluating the impact of Chartered Manager, May 2015



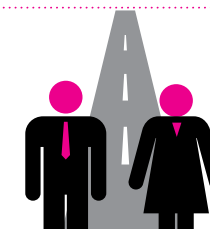
**96%**

use Chartered Manager as proof  
of experience of leading people  
and managing change.

Findings taken from Mapping Management Excellence: Evaluating the impact of Chartered Manager, May 2015

*"Completing the level 5 apprenticeship and receiving chartered manager status has given me the tools and confidence for me to progress my career into management."*

**Angela Sheridan**  
Chartered Management Degree Apprenticeship graduate, City College Norwich



### Degree Apprenticeships

As part of its plan to create three million new apprentices by 2020, the Government has worked with employers to create the new breed of degree apprenticeships – including Chartered Manager Degree Apprenticeship.



### Chartered Manager Degree Apprenticeship

Designed by employers for employers, CMDAs provide world-class business training, work-based learning and professional development, right through to **Chartered Manager status**.



# Chartered Manager Degree Apprenticeship

## Level 6

**DURATION:** 42 MONTHS  
1 DAY PER WEEK

**APPLY VIA EMAIL:**  
[ccn.ac.uk/apprenticeships](mailto:ccn.ac.uk/apprenticeships)



Applications  
from international  
students welcome

### About you

A Chartered Manager is someone who can take responsibility for people, projects, operations and/or services to deliver long term organisational success with the professional recognition of their ability to deliver impact, behave ethically and demonstrate their commitment to continual learning and development. Professional managers can manage complexity and deliver impact at a strategic and/or operational level with management and leadership responsibility for setting and delivering organisational objectives through a wide range of functions.

You will need an employer to agree to both fund and support you throughout the duration of the course.

### About the course

As part of the apprenticeship, you will complete the BA (Hons) in Leadership and Management degree that is awarded by UEA and has been developed in association with the Chartered Management Institute. You will complete an End Point Assessment that will lead to membership of the Chartered Management Institute.

Our Leadership and Management degree is designed to offer higher level training to business professionals and provide the essential skills that CMI research shows is required by organisations. It has been developed in consultation with local partners and professional bodies.

The course is taught one day each week for 30 weeks and you will be required to take part in a variety of lectures, demonstrations, presentations, seminars, group work, simulations, case studies and self study.

### What you will learn

This apprenticeship will equip you with the skills and strategies to deal with contemporary challenges in management practice. The emphasis on application of management and leadership skills means that this is a vocational and academic programme and will enable apprentices to both ground their learning in the workplace and to reflect on work practice in an academic context. You will study and apply finance, marketing, operations management, project management leadership and enterprise theory into workplace situations.

### You can go on to do

This well recognised qualification will enhance your ability to contribute effectively to your organisation and thus the possibility of progression into and through supervisory and management roles.

Our past students have followed careers in marketing, personnel (HRM), accounts and finance, financial services, management and teaching.







# Construction & Engineering

---

<b>BSc (Hons) Professional Aviation Engineering Practice</b>	<b>64</b>
<b>HNC Engineering</b> (Mechanical Engineering)	<b>65</b>
<b>HNC Engineering</b> (Electrical & Electronic Engineering)	<b>66</b>
<b>HND Construction &amp; The Built Environment</b> (Civil Engineering)	<b>67</b>
<b>HND Construction &amp; The Built Environment</b> (Construction - Management)	<b>68</b>

---


# BSc (Hons) Professional Aviation Engineering Practice

**COURSE CODE:** F0079

**DURATION:** 3 YEARS  
5 DAYS PER WEEK

**APPLY VIA:**  
ccn.ac.uk/degrees

**DELIVERED AT:**  
City College Norwich

 **Applications  
from international  
students welcome**

## About you

You will need a minimum of 96 UCAS points or an appropriate Level 3 qualification. You will also need GCSE English & Maths at grade 4/C or above.

Mature students with a relevant industry background may also be considered.

Applications from students whose first language is not English are welcome. For International students we require evidence of proficiency in English (including writing, speaking, listening and reading); the required minimum is IELTS Academic (SELT) 6.0 overall (minimum 5.5 in all components).

## About the course

This specialist degree course will allow you to gain practical experience alongside advanced academic study. Delivered in partnership with KLM UK Engineering and awarded by University of East Anglia, this course has been designed to ensure you develop the knowledge, technical skills, understanding and awareness necessary to work in technical, supervisory or management roles in the industry and will help kick start your journey to a high-flying career.

## What you will learn

This course will provide you with the opportunity to complete European Aviation Safety Agency (EASA) B1.1 or B2 examinations (subject to chosen pathway in year two), alongside academic study for an aviation engineering degree.

You will be able to work on a fully functional Boeing 737 aircraft in the International Aviation Academy Norwich's (IAAN) world class Aviation Emulation Zone® whilst studying in our first class learning environment at IAAN.

Please note, if you decide to complete the B licence EASA examinations, you will be required to gain two years' experience at an approved maintenance organisation before being able to apply for either a Category B1.1 or B2 EASA Licence.

## You can go on to do

Successful completion of this course will give you the opportunity to progress on to a range of technical, supervisory and, in due course, management roles in the aviation sector. You can also progress on to further study at Masters, M.Phil and/or PhD level.

 **Applications  
from international  
students welcome**

**COURSE CODE:** G0025

**DURATION:** 3 YEARS  
1 DAY PER WEEK

**APPLY VIA:**  
ccn.ac.uk/apply

*Progressing students please  
apply via City College Norwich.  
External applicants apply via  
the UCAS process.*

**DELIVERED AT:**  
City College Norwich

# HNC Engineering (Mechanical Engineering)

## About you

You will have successfully completed a Level 3 Mechanical Engineering course or equivalent.

Applications from students whose first language is not English are welcome. For International students we require evidence of proficiency in English (including writing, speaking, listening and reading); the required minimum is IELTS Academic (SELT) 6.0 overall (minimum 5.5 in all components).

## About the course

HNC engineering qualifications are widely recognised by industry and higher education as the principle vocational qualification at Levels 4 & 5. It covers the increasing need for quality professional and technical education pathways and has a greater emphasis on employer engagement and work readiness.

Our assessments will consider cognitive skills (what students know) along with effective and applied skills (respectively how they behave and what they can do).

## What you will learn

You will cover a range of core, optional and specialist units. The course will also develop transferable skills useful for work and for higher education, including research skills, the ability to meet deadlines and communication skills. Students are required to apply their knowledge to a variety of assignments and activities with a focus on the holistic development of practical, interpersonal and higher thinking level skills.

## You can go on to do

You can top up to a HND and then look to progress onto a Level 6 BEng (Hons) course which may lead onto Chartered status. This qualification can assist your career development and progression within the engineering sector by opening up new opportunities including to work in international engineering settings. Should sufficient numbers of HNC students wish to top up to HND, then this course may be made available by City College Norwich as a progression route.



# HNC Engineering

(Electrical & Electronic  
Engineering)

**COURSE CODE:** G0024

**DURATION:** 3 YEARS  
1 DAY PER WEEK

**APPLY VIA:**  
ccn.ac.uk/apply

**DELIVERED AT:**  
City College Norwich

 **Applications  
from international  
students welcome**

## About you

Applicants should have one of the following; BTEC National Certificate, Diploma in Electrical Engineering, one A Level in either Mathematics or Physics plus four GCSEs at either grade A\*-C or grade four and above, Access programmes, GNVQ Advanced Level in Engineering or Advanced Diploma in Engineering (minimum grades apply, please ask for details).

The HNC qualifications offered from September 2017 are new versions introduced by BTEC. As a result, anyone wanting to accredit prior learning is advised to discuss this at interview.

Applications from students whose first language is not English are welcome. For International students we require evidence of proficiency in English (including writing, speaking, listening and reading), the required minimum is: IELTS Academic (SELT) 6.0 overall (minimum 5.5 in all components).

## About the course

If you want to develop higher level professional skills relevant to the Electrical and Electronic Engineering sectors. The programme uses a combination of traditional classroom teaching, open learning and research-based experiential learning, delivered via laboratory experiments and demonstrations, industry standard IT applications and group activities.

## What you will learn

The course comprises mandatory and optional units.

The mandatory units are:

Level 4  
Engineering Design  
Engineering Maths  
Engineering Science  
Managing a Professional Engineering Project  
Electrical and Electronic Principles

Students will complete additional modules selected by the course team.

The HNC programme team uses a combination of traditional classroom teaching, open learning and research-based experiential learning, laboratory experiments and demonstrations, industry standard IT applications and group

## You can go on to do

You can top up to a HND and then look to progress onto a Level 6 BEng (Hons) course which may lead onto Chartered status. This qualification can assist your career development and progression within the engineering sector by opening up new opportunities including to work in international engineering settings. Should sufficient numbers of HNC students wish to top up to HND, then this course may be made available by City College Norwich as a progression route.

# HND Construction & the Built Environment

(Civil Engineering)

**COURSE CODE:** G1966

**DURATION:** 3 YEARS  
1 DAY PER WEEK

**APPLY VIA:**  
ccn.ac.uk/apply

**DELIVERED AT:**  
City College Norwich

 **Applications  
from international  
students welcome**

## About you

You will need GCSE Maths and English at grade 4/C or above and one of the following:

BTEC National Certificate or Diploma in construction or civil engineering 2 relevant A Levels plus 4 GCSEs at grade 4/C or above including English and Maths Access course with industrial experience Extended Diploma in Construction & the Built Environment

Mature students with a relevant industry background may also be considered subject to interview.

Applications from students whose first language is not English are welcome. For International students we require evidence of proficiency in English (including writing, speaking, listening and reading); the required minimum is IELTS Academic (SELT) 6.0 overall (minimum 5.5 in all components).

## About the course

This course is a pathway within the Level 5 BTEC Higher National Diploma in Construction and the Built Environment which offers 6 "specialist pathways" designed to support progression into relevant occupational areas or to degree level study.

Students attend college for one day per week for three years. The day the course takes place each year may change.

## What you will learn

You will take a variety of mandatory and optional units with mandatory units including:

- Individual Project
- Construction Technology
- Science and Materials
- Construction Practice and Management
- Construction Information (Drawing, Detailing, Specification)
- Mathematics for Construction
- Principles of Structural Design
- Group Project
- Further Mathematics for Construction
- Geotechnics and Soil Mechanics
- Advanced Structural Design

## You can go on to do

This programme is widely recognised by employers and professional bodies. It can provide pathways to degree top up education (Level 6) and opportunities for membership of relevant professional bodies.

In addition, the qualifications may provide links to industry related and employer supported apprenticeship schemes that can provide opportunities for enhanced employability.

# HND

## Construction & the Built Environment

(Construction - Management)

**COURSE CODE:** G0036

**DURATION:** 3 YEARS  
1 DAY PER WEEK

**APPLY VIA:**  
[ccn.ac.uk/apply](http://ccn.ac.uk/apply)

**DELIVERED AT:**  
City College Norwich

**i** Applications from international students welcome

### About you

You will need GCSE Maths and English at grade 4/C or above and one of the following:

BTEC National Certificate or Diploma in construction or civil engineering 2 relevant A Levels plus 4 GCSEs at grade 4/C or above including English and Maths Access course with industrial experience Extended Diploma in Construction & the Built Environment

Mature students with a relevant industry background may also be considered subject to interview.

Applications from students whose first language is not English are welcome. For International students we require evidence of proficiency in English (including writing, speaking, listening and reading); the required minimum is IELTS Academic (SELT) 6.0 overall (minimum 5.5 in all components).

### About the course

This course is a pathway within the Level 5 BTEC Higher National Diploma in Construction and the Built Environment which offers 6 "specialist pathways" designed to support progression into relevant occupational areas or on to degree level study.

Students attend college for one day per week for three years. Please note: the day the course takes place each year may change.

### What you will learn

You will take a variety of mandatory and optional units with mandatory units including:

- Individual Project
- Construction Technology
- Science and Materials
- Construction Practice and Management
- Legal and Statutory responsibilities in Construction
- Construction Information (Drawing, Detailing, Specification)
- Group Project
- Contracts & Management
- Project Management
- Management for Complex Buildings

### You can go on to do

This course is widely recognised by employers and professional bodies. It can provide pathways to degree top up education (Level 6) and opportunities for membership of relevant professional bodies.

In addition, the qualifications may provide links to industry related and employer supported apprenticeship schemes that can provide opportunities for enhanced employability.







# Health & Community Studies

BA (Hons) <b>Childhood Studies (Top up)</b>	72
BA (Hons) <b>Childhood and Youth Studies</b>	74
BA (Hons) <b>Integrated Health &amp; Social Care (Top up)</b>	75
FdA <b>Early Years (with Early Years Educator Status)</b>	76
FdSc <b>Health Studies</b>	77
FdSc <b>Mental Health Practice</b>	78



Applications  
from international  
students welcome

**COURSE CODE:** X310

**DURATION:** 1 YEAR  
1 DAY PER WEEK

**APPLY VIA:**  
ccn.ac.uk/degrees

*Progressing students please  
apply via City College Norwich.  
External applicants apply via  
the UCAS process.*

**DELIVERED AT:**  
City College Norwich

# BA (Hons) Childhood Studies (Top up)

## About you

Most applicants to this course will have completed the Foundation Degree in Early Years. For students from other courses, we will conduct a mapping of modules to ensure that there is a close match.

Applications from students whose first language is not English are welcome. For International students we require evidence of proficiency in English (including writing, speaking, listening and reading), the required minimum is: IELTS Academic (SELT) 6.0 overall (minimum 5.5 in all components).

## About the course

This course is awarded by UEA. It takes one year to complete, and requires attendance in college one day a week, enabling most students to study for the qualification at the same time as working part time.

The course is taught through group work, tutorials, lectures, seminars, practical research and guided independent study. Students will complete four modules plus a dissertation (extended independent research project).

Students' work is assessed using a variety of methods including written assignments, individual presentations, a student-led seminar and an examination.

## What you will learn

You will cover key topics related to working with or for children from ages 0-18 in a variety of settings. There is a strong emphasis in each of the modules on linking academic study to employability and professional practice.

You will be given opportunities to learn from a wide range of practitioners from different fields such as teaching, social work and health care. Students are also encouraged to compare and learn from approaches elsewhere in the UK and further afield.

## You can go on to do

This course is designed to help you progress on to roles in the childhood sector with supervisory and managerial responsibility.

Completion of this course can lead on to postgraduate study and qualifications in related fields such as teacher training, occupational therapy, children's health or social work.



## My City College Norwich journey:

**Sally**

Studied:  
**Foundation Degree Health Studies**



**"I chose to undertake my Foundation Degree in Health Studies at CCN because I felt that I had a wealth of experience and a strong desire to help not only my employer and its service users, but also to help myself grow as a person.**

**I am passionate about service improvement and I knew that I could make a difference to more people if only I could expand on my existing skill set.**

**At CCN, I gained self-confidence, self-worth, and self-belief. I have never been particularly confident in my abilities but the results I achieved made me realise I am capable of a great deal more than I ever thought."**





Applications  
from international  
students welcome

# BA (Hons) Childhood & Youth Studies

**COURSE CODE:** L530

**DURATION:** 3 YEARS  
2 DAYS PER WEEK

**APPLY VIA:**  
ccn.ac.uk/degrees

**DELIVERED AT:**  
City College Norwich

Students' work is assessed using a variety of methods including written assignments, individual and group presentations, creating learning and development activities, research, seminars, portfolios and examinations.

## What you will learn

You will cover key topics related to children's development from ages 0-18 and learn about working with children in a variety of settings.

There is a strong emphasis in each of the modules on linking academic study to employability and professional practice. You will be encouraged to gain work-based practice to support your progress. You will be given lots of opportunities to learn from a wide range of practitioners from different fields such as teaching, social work and health care. Students are encouraged to compare and learn from approaches elsewhere in the UK and further afield.

Enrichment is a key part of the course and modules feature external speakers and local field trips. The course looks at the whole sector, not just education.

## You can go on to do

This course is designed to help you to progress on to roles in the childhood sector with supervisory and managerial responsibility. Completion can lead on to postgraduate study and qualifications in related fields such as teacher training, occupational therapy, children's health or social work.

## About you

You will have a minimum of 48 UCAS points (or equivalent). GCSE English at grade 3/D or above or equivalent is desirable. In addition, you should have sufficient and appropriate prior experience in childcare and be able to show the potential for successful study at degree level and commitment to study and work in the sector. Most candidates will be interviewed and will need to be able to demonstrate an appropriate level of understanding of working with children.

Applications from mature students are welcome if they can demonstrate appropriate qualifications and suitable experience.

Applications from students whose first language is not English are welcome. For International students we require evidence of proficiency in English (including writing, speaking, listening and reading), the required minimum is: IELTS Academic (SELT) 6.0 overall (minimum 5.5 in all components).

## About the course

This course is awarded by UEA. It takes three years to complete, and requires attendance in college two days a week, enabling most students to study for the qualification at the same time as working part time.

The course is taught through group work, tutorials, lectures, seminars, practical based research and guided independent study.

**COURSE CODE:** L510

**DURATION:** 1 YEAR  
1 DAY PER WEEK

**APPLY VIA:**  
ccn.ac.uk/degrees

*Progressing students please  
apply via City College Norwich.  
External applicants apply via  
the UCAS process.*

**DELIVERED AT:**  
City College Norwich



Applications  
from international  
students welcome

# BA (Hons) Integrated Health & Social Care (Top up)

## About you

You will need a minimum of 240 credits from a FdA, Dip HE or FdSc course. We will be looking for a minimum of 50% average at Foundation Degree level that is evidenced by an academic transcript. Most applicants to this course will have completed Foundation Degrees in Social Care Practice, Health studies, Early Years or Childhood Studies. For students from other courses, we will conduct mapping of the modules to ensure there is a close match.

Applications from students whose first language is not English are welcome.

For International students we require evidence of proficiency in English (including writing, speaking, listening and reading), the required minimum is: IELTS Academic (SELT) 6.0 overall (minimum 5.5 in all components).

## About the course

The course is taught through group work, tutorials, lectures, seminars, practical based research and guided independent study.

Students' work is assessed using a variety of methods, including written assignments, individual and group presentations, creative activities, use of ICT equipment and software, seminars, portfolios and examinations.

## What you will learn

The course extends knowledge around critical thinking and the leadership and management aspects of health and social care.

Modules allow you to consider a specific area of the field as you move to more independent study. Modules studied are contemporary issues; leadership, management and commissioning; professional skills and a dissertation.

## You can go on to do

The course will enable you to have a career in care management. You can also go on to study at masters level in social work, physiotherapy and occupational therapy.

**This course is subject to re-validation during the 20/21 academic year  
and therefore the details above may change.**

**i** Applications from international students welcome

**COURSE CODE:** LX53

**DURATION:** 2 YEARS  
1 DAY PER WEEK

**APPLY VIA:**  
ccn.ac.uk/degrees

**DELIVERED AT:**  
City College Norwich

# FdA

## Early Years

(with Early Years Educator Status)

### About you

You should have sufficient and appropriate prior experience in childcare and an appropriate level 3 qualification. You must also show that you have the potential to successfully study at degree level and a commitment to study and work in the childcare sector. Applicants with appropriate prior experience in childcare, but who do not hold an appropriate level 3 qualification, may also be considered.

Applications from students whose first language is not English are welcome. For International students we require evidence of proficiency in English (including writing, speaking, listening and reading), the required minimum is: IELTS Academic (SELT) 6.0 overall (minimum 5.5 in all components).

### About the course

This course is awarded by UEA. It takes two years to complete, and requires attendance in college one day a week, enabling most students to study for the qualification at the same time as working. The course is vocationally based, meaning that all students will need to be working or volunteering in an early years setting and is endorsed by the SEFDEY (Sector Endorsed Foundation Degrees Early Years).

The course is taught through group work, tutorials, lectures, seminars, practical based research and guided independent study.

Students' work is assessed using a variety of methods, including written assignments, individual and group presentations, creating learning and development activities, research, use of ICT equipment and software, seminars, portfolios and examinations.

### What you will learn

You will cover key topics related to early years development and working with children in a variety of settings. There is a strong emphasis in each of the modules on linking what you learn to your own professional practice. You will be supported to make positive changes to your working practices and to contribute to the development of practice within the setting where you work.

You will also be given opportunities to learn from a wide range of practitioners from different fields such as teaching, social work and health care. Students are also encouraged to compare and learn from approaches elsewhere in the UK and further afield.

Enrichment is a key part of the course and modules feature external speakers and local field trips.

### You can go on to do

This course, and the practical learning experiences you will develop through it, are designed to help you to progress on to higher level roles with greater supervisory and managerial responsibility.

Graduating students can top up to a BA (Hons) degree in Childhood Studies or BA (Hons) Integrated Health & Social Care. Completion of a top up degree can lead on to postgraduate study and qualifications in related fields such as teacher training, occupational therapy or health and social care.

**i** Applications from international students welcome

**COURSE CODE:** B900

**DURATION:** 2 YEARS  
1 DAY PER WEEK

**APPLY VIA:**  
ccn.ac.uk/degrees

**DELIVERED AT:**  
City College Norwich

# FdSc

## Health Studies

### About you

You will need a level 3 qualification in a related subject or proven experience in practice. Above all we expect you to have the commitment and enthusiasm to be successful. All shortlisted applicants are offered an interview.

We welcome applications from mature students who have experience in practice or other suitable qualifications. You will need to be employed or have a voluntary placement for a minimum of eight hours per week.

Applications from students whose first language is not English are welcome. For International students we require evidence of proficiency in English (including writing, speaking, listening and reading), the required minimum is: IELTS Academic (SELT) 6.0 overall (minimum 5.5 in all components).

### About the course

The FdSc Health Studies is a two year course which requires one day of college attendance a week, to enable you to fit studying with work.

This course has been designed in conjunction with local employers (the Primary Care Trusts and the Norfolk and Norwich Hospital Trust) and is validated by UEA, ensuring it is an ideal qualification for healthcare workers. The emphasis on skills for work means that this is a truly vocational programme and will enable you to both ground your learning in the workplace as well as reflect on work practice in an academic context.

Students' work is assessed using a variety of methods, which may include, written assignments, individual and group presentations, creative activities, field research, use of ICT equipment and software, seminars, portfolios and examinations.

### What you will learn

This course includes core modules to enable you to support your academic practice. These include Higher Learning Skills and Research Skills.

This course has a science element and you will cover topics including anatomy and physiology, pharmacology, science of disease and health and nutrition.

You will also study topics around caring for and supporting service users. These will include psychosocial perspectives, person focused care, promoting health and health and social care for understanding how to support the service user/patient and their family.

### You can go on to do

The course prepares you for a range of roles in the health and social care sector. You can also progress onto further study in the areas of nursing, allied professions, care management, social work or teaching.

There is also an opportunity at the College to progress onto a one year top up to gain a full degree with BA (Hons) Integrated Health and Social Care Top Up.



**i** Applications from international students welcome

**COURSE CODE:** B760

**DURATION:** 2 YEARS  
1 DAY PER WEEK

**APPLY VIA:**  
[ccn.ac.uk/degrees](http://ccn.ac.uk/degrees)

**DELIVERED AT:**  
City College Norwich

# FdSc Mental Health Practice

## About you

You will need a level 3 qualification in a related subject or proven experience in practice. Above all we expect you to have the commitment and enthusiasm to be successful. All shortlisted applicants are offered an interview.

We welcome applications from mature students who have experience in practice or other suitable qualifications. You will need to be employed or have a voluntary placement for a minimum of eight hours per week. Applications from students whose first language is not English are welcome. For International students we require evidence of proficiency in English (including writing, speaking, listening and reading), the required minimum is: IELTS Academic (SELT) 6.0 overall (minimum 5.5 in all components).

## About the course

A two year course which requires one day of college attendance a week. The course is validated by UEA.

Students are taught in small classes and receive high levels of support. The course is taught through group work, tutorials, lectures, seminars, practical based research and guided independent study.

Students' work is assessed using a variety of methods, including written assignments, individual and group presentations, creative activities, field research, use of ICT equipment and software, seminars, portfolios and examinations.

## What you will learn

This course will allow you to develop your professional skills, academic knowledge and behaviours as a future mental health professional. You will engage in a range of modules that build an unpinning knowledge of the evolution of mental health, current landscape of the sector, legal and ethical requirements of mental health practice and theory of a range of psychological, social, biological and therapeutic interventions to support recovery.

The course includes scientific elements supporting the link between physical and mental health and you will be encouraged to consider how you could use your newfound knowledge as a leader/manager in the sector through the supervision and leadership module.

You will also have the opportunity to put your theoretical knowledge in to practice through a range of teaching and assessment methods and will be supported to develop your academic skills through Higher Learning Skills and Research Skills modules.

## You can go on to do

The course prepares you for a range of roles in the mental health sector. You can also progress onto further study in the areas of nursing, allied professions, care management, social work or teaching.

There is also an opportunity at the College to progress onto a one year top up to gain a full degree with BA (Hons) Integrated Health and Social Care Top Up.

**This course is subject to re-validation during the 20/21 academic year and therefore the details above may change.**





# Humanities

---

BA (Hons) <b>English</b>	82
BA (Hons) <b>Psychology with Sociology</b>	83

---





Applications  
from international  
students welcome

**COURSE CODE:** Q320

**DURATION:** 3 YEARS  
2 DAYS PER WEEK

**APPLY VIA:**  
[ccn.ac.uk/degrees](http://ccn.ac.uk/degrees)

**DELIVERED AT:**  
City College Norwich

# BA (Hons) English

## About you

You will usually need a minimum of 80 UCAS points but we have no standard offer as we take into account your reference, motivation and commitment to the course, as well as any projected or actual A Level grades or other qualifications.

Applications from Access Diploma students are welcome. We usually look for 30 credits at Merit. Applicants may be invited for interview.

Applications from students whose first language is not English are welcome. For International students we require evidence of proficiency in English (including writing, speaking, listening and reading), the required minimum is: IELTS Academic (SELT) 6.0 overall (minimum 5.5 in all components).

## About the course

This course is a three year UEA validated degree. Although the course is full time, teaching is normally delivered over two full days a week, allowing most students to study for the qualification whilst also working part time.

The course is taught through lectures, group work, seminars, practical research, tutorials and guided independent study. Students' work is assessed using a variety of methods, including written assignments, individual and group presentations, portfolios and examinations.

## What you will learn

The course will extend your knowledge of literary history and culture, from Ancient Greece to the present. The first year modules will provide the knowledge and skills required for successful study at degree level. These include modules such as genre, evolution of western society, myth and criticism and reading the visual.

You will develop techniques for close reading literary texts and constructing analytical arguments, as well as skills of written and oral communication.

In the second and third years you will build on this knowledge in a series of modules focusing on different periods of literary history, including Shakespeare and the Renaissance, the Restoration, the romantic period, the Victorian period, modernism and contemporary literature and culture.

These period modules will be supplemented by studies of particular genres or themes within literature, such as children's literature and dystopian fiction.

## You can go on to do

You can go on to careers in teaching at both primary and secondary level, or to further study through MA and other postgraduate courses.

Other careers that our students have entered include publishing, archiving and curatorship, human resources, administration, social work, social care and educational psychology.



Applications  
from international  
students welcome

**COURSE CODE:** C8L3

**DURATION:** 3 YEARS  
2 DAYS PER WEEK

**APPLY VIA:**  
[ccn.ac.uk/degrees](http://ccn.ac.uk/degrees)

**DELIVERED AT:**  
City College Norwich

# BA (Hons) Psychology with Sociology

## About you

You will usually need a minimum of 80 UCAS points but we have no standard offer as we take into account your reference, motivation and commitment to the course, as well as any projected or actual A Level grades or other qualifications.

Applications from Access Diploma students are welcome. We usually look for 30 credits at Merit. Applicants may be invited for interview.

Please note that you must apply for this course through UCAS.

Applications from students whose first language is not English are welcome. For International students we require evidence of proficiency in English (including writing, speaking, listening and reading), the required minimum is: IELTS Academic (SELT) 6.0 overall (minimum 5.5 in all components).

## About the course

The course is typically taught over two weekdays at the Norfolk House building in the heart of the city, and the year is comprised of three 10 week terms.

In each of the first two years, the course contains six modules and in the third year, you will be required to study four modules as well as undertake a dissertation.

## What you will learn

The psychology component of the course will introduce the subdisciplines of the subject including cognitive and biological perspectives. There is a focus on social psychology and mental health and the course explores the way that sociology and psychology overlap and interrelate. These psychology and sociology based understandings are applied to a variety of social issues such as addiction, relationship behaviour and communication.

The course also includes an understanding of media, crime and deviance in the second year which is developed through psychology and crime in the final year.

The application of the psychological and sociological theories are continuously applied through the application to the mind and wider society.

## You can go on to do

You can go on to train to be a psychologist through postgraduate qualifications and training. There are also a wide variety of graduate jobs in the health, education and social care sectors that can be entered directly where psychological and sociological skills are highly relevant.

These skills are also highly relevant to occupations in areas such as business, marketing, communications, human resources and research.



# Public Services

---

BA (Hons) <b>Crime, Terrorism &amp; Global Security</b>	86
BA (Hons) <b>Leadership in the Public Sector</b>	87

---



# BA (Hons) Crime, Terrorism & Global Security

**COURSE CODE:** E3093-2

**DURATION:** 3 YEARS  
2-3 DAY PER WEEK

**APPLY VIA:**  
easton.ac.uk/degrees

**DELIVERED AT:**  
Easton College

## About you

You should have a minimum of 96 UCAS points from A Levels or equivalent and GCSE Maths and English at grade 4/C or above or equivalent. We also welcome applications from mature (21+) students who have experience in practice or other suitable qualifications.

Applications from students who first language is not English are welcome.

Above all, we expect you to have the commitment and enthusiasm to be successful.

## About the course

This course is designed for students who are looking to enter an armed or blue light service and will allow you to gain experience and insight into a range of themes including terrorism and insurgency, organised crimes, global security and human rights issues.

You will be equipped with the knowledge, lateral thinking and analytical skills required to enter a broad range of public services including the police, intelligence services, commissioned entry into the armed forces and civil service.

## What you will learn

During the course, you will gain comprehensive experience and insight into a broad range of themes including terrorism and insurgency, organised crimes, global security and human rights issues. All modules are appropriately designed to equip you with the knowledge, lateral thinking and analytical skills you need to start a successful career in the public services industry.

You will focus on a broad range of topics modules including Air and Sea Power, Terrorism and Counter Terrorism, Organised Crime, Crimes of the Rich and Powerful and Nuclear Strategy.

The course is delivered through lectures, presentations, seminars, tutorials and self-directed specific study. There is also a strong emphasis on developing employability skills.

## You can go on to do

This course is designed to help you to progress on to a career in the industry by entering employment or graduate internships in a range of careers including security services, police, MI5/6, government or uniformed services. You can also progress on to postgraduate study in related fields.



Applications  
from international  
students welcome

# BA (Hons) Leadership in the Public Sector

**COURSE CODE:** N203

**DURATION:** 3 YEARS  
2 DAYS PER WEEK

**APPLY VIA:**  
easton.ac.uk/degrees

**DELIVERED AT:**  
City College Norwich

## About you

The course is suitable if you have an appropriate Level 3 qualification and wish to work towards management both in the public and private sector.

It is for those who wish to extend their personal knowledge of leadership and management skills and understand how these skills and theories work in practice as an efficient manager of people.

## About the course

The course is delivered over two full days of teaching and learning. This allows time for you to work part time and to develop your academic skills outside of the teaching environment by doing your own research or talking to staff during tutorials.

You will develop skills you had never thought you possessed and you will also develop the skills and confidence to use them in a future work environment.

## What you will learn

Leadership and management is delivered in a progressive format over the three years with modules such as politics and democracy, globalisation, terrorism, law and criminology. In the first year you will learn about mental health in the work environment and also how ethics affect our work lives.

As a leader of the future you will need to develop a new range of internationally recognised skills and we work hard to help you develop these individual and personal skills. In the third year you will learn how to mentor within the workplace and also you will get the opportunity to develop your own research topic for your dissertation.

## You can go on to do

Students have gone on to be police constables, military officers, teachers and NHS workers. A high percentage of students go on to masters level study at UK universities.



# Sport

---



# Sport

If you're looking to work in one of the many areas of the sport, coaching, health or fitness sector, our degree level sport courses could be for you.

## About our degree level sport courses

Our courses will provide you with an opportunity to study the key areas of sport and exercise science such as sports coaching, development, health, fitness, strength & conditioning.

You will have access to a wide range of industry standard facilities across our City College Norwich and Easton College campuses including fully equipped gyms and sports halls, Tennis Centre and Human Performance Laboratory. These will help you to develop a variety of practical skills and put some of your theoretical knowledge in to practice.

Our degree level sport courses are delivered through a mixture of workshops, lectures, seminars, practical sessions, tutorials and self-directed study. As your course progresses, there will be opportunities to specialise in areas of interest through flexible assessments. These include coursework (case studies/reports), group presentations, practical assessments, reflective journals, open and closed book exams, poster presentations, portfolios of evidence and the creation and delivery of sporting and coaching events.

Our degree level sport courses are currently being revalidated.

For the most up to date course listings, visit [ccn.ac.uk/degrees](http://ccn.ac.uk/degrees) or [easton.ac.uk/degrees](http://easton.ac.uk/degrees)

## You can go on to do

You can go on to employment or graduate internships in a range of industry based careers such as research and development, activity leaders, health promotion and strength and conditioning coaches. Some students have also established successful businesses in the coaching industry or progressed onto teacher training opportunities in secondary and primary settings.

You can also go on to Masters degree level study in areas such as physiotherapy, sports performance, sports psychology, sports management, strength and conditioning, exercise physiology and sports therapy.

## Find out more

To find out which of our degree level sport courses are the right choice for you, visit [ccn.ac.uk/degrees](http://ccn.ac.uk/degrees) or [easton.ac.uk/degrees](http://easton.ac.uk/degrees) to view our most up to date course listings.

## My City College Norwich journey:

### Rui Rodrigues

 @rui\_hybrid\_performance

Studied: **BSc Sports Coaching & Science**

**Owner of coaching business Hybrid Performance: Strength & Conditioning and completing an MSc in Strength & Conditioning.**

"I feel the balance between academic learning and exposure to practical application of the course has provided me with a well rounded set of tools to venture out in the industry. Whilst at college, myself and peers were always supported and regularly provided with opportunities to coach

and develop our skill set. I feel this has been a massive contributing factor to get me to where I am today.

The content was well rounded and covered all major aspects of sports science and coaching. Its versatility also enabled students to direct their studies to their particular interests. I would absolutely recommend the course to anyone looking to venture into a career in the realm of sports science."

## My City College Norwich journey:

### Ryan Elton

 @the.movement.coach

Studied: **BSc Sports Coaching & Science**

**Owner of coaching business The Movement Coach.**

"The BSc degree course provided me with valuable academic knowledge of the coaching profession and key opportunities to develop my on field application. I believe the course has been crucial to the professional success I have had so far and,

without a doubt, it has been influential to my career in sport.

At the college, the close interaction and guidance available from the tutors was so beneficial and the connection I built with my classmates has helped create friendships for a lifetime."

# Additional Information

---



# Access to Higher Education



Want to study for a degree but don't have the qualifications?

Get to where you want to be with an Access to Higher Education course

Access to Higher Education courses are an ideal starting point that can help you develop the skills and qualifications to progress to studying for a degree and your future career.

Access courses are a flexible alternative to A Levels and are a recognised qualification for progression to Degree and Higher Education courses.

## What can I study?

- Agriculture
- Animal and Equine Studies
- Art and Design
- Business Management
- Conservation
- Criminal Law and Policing
- Engineering
- Humanities and Social Sciences
- Science for Health Practitioners
- Sports Science
- Veterinary Science

All courses have been developed with employers and progression in mind, and many are part of the New Anglia Local Enterprise Partnership's 10 priority sectors.

This means that you will be provided with the skills and qualifications needed to progress to further study and gain employment in growing industries.

## Am I eligible to study?

To study an Access to Higher Education course you need to meet the following criteria:

- Aged 19+
- Have a grade C (grade 4) or above in GCSE English and Maths

Please note that we are not able to accept Adult Numeracy, Adult Literacy, Key Skills or Functional Skills in lieu of GCSEs.

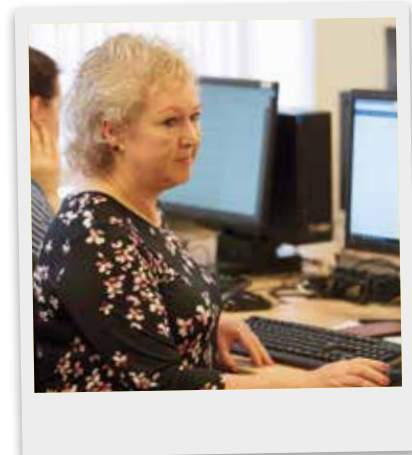
Selection is by interview to discuss your suitability for the course and whether the course is right for you.

As part of this process you will need to complete online assessments and submit a short piece of writing to check you are at the right level to start the course. Advice can be given about alternative ways forward if necessary.

## Widely recognised by universities

Access to Higher Education courses are widely recognised by UK universities and colleges, including our College.

We advise that if you are hoping to go on to do a degree course at a specific university, you should contact them to check that the Access to Higher Education course you have chosen is in an appropriate subject area and will be recognised by them.



## International and ESOL students

International students whose qualification is not recognised by UK universities or colleges, and who are 19 and over, may also wish to choose this pathway as a route to enter degree level study. Applications from students whose first language is not English are welcome. We require evidence of proficiency in English (including writing, speaking, listening and reading).

Please note, the required minimum entry requirement is either:

- IELTS Academic (SELT): 6.0 overall (minimum 5.5 in all components); or
- GCSE English and GCSE Mathematics, both at either GCSE grade C and above or grade 5.



Find out more at: [ccn.ac.uk/access-to-higher-education](https://ccn.ac.uk/access-to-higher-education) or [easton.ac.uk/access-to-higher-education](https://easton.ac.uk/access-to-higher-education)

## Financial support

City College Norwich offers flexible payment plans to help you spread the cost of fees. You can apply for an Advanced Learner Loan and bursaries are available to support childcare and travel costs.

# Teacher & Professional Development

The delivery of Professional Development including teaching, coaching and mentoring, assessment/quality assuring and other CPD activities is undertaken by a group of highly experienced practitioners, dedicated to improving the skills and confidence of practice & practitioners.

## This is done through:



Supporting and training new teachers



Developing assessment and verification practice



Review of teaching, learning and assessment with developmental feedback



Coaching and mentoring



Challenging and extending staff's expertise



Supporting the development of e-learning



Supporting individuals and groups of staff to continuously develop



Modelling best practice

Our mission statement:

**“To support, guide and develop all the processes which drive up the quality of teaching, learning and assessment, thereby ensuring that all students have the best learning experience possible.”**



## Courses offered

### Teaching, training and support

- L5 Diploma in Education and Training
- L4 Certificate in Education and Training
- L3 Award in Education and Training
- L3 Award / Certificate for Learning Support Practitioners
- City & Guilds - Introduction to Training Skills

### Coaching & Mentoring

- L3 Award in Effective Mentoring
- L3 Award in Effective Coaching

### Assessment and quality assuring Levels 3 & 4

*Level 3 Awards in Assessing including units:*

- Understanding the Principles and Practices of Assessment
- Assessing Competence in the Work Environment
- Assess Vocational Skills, Knowledge and Understanding

*Leading to:*

- Level 3 Award in Understanding the Principles and Practices of Assessment
- Level 3 Award in Assessing Competence in the Work Environment

- Level 3 Award in Assessing Vocationally Related Achievement
- Level 3 Certificate in Assessing Vocational Achievement

### Level 4 Award and Certificate:

- Level 4 Award in Understanding the Internal Quality Assurance of Assessment Processes and Practice
- Level 4 Award in the Internal Quality Assurance of Assessment Processes and Practice
- Level 4 Certificate in Leading the Internal Quality Assurance of assessment processes and Practice (completion of above two mandatory to achieve this)

## Other support available

- Bespoke professional development and courses to suit specific industry needs
- Individual or group coaching for performance improvement
- Teaching and learning coach support
- Lesson observation training and feedback
- Specialist support for teachers and learning support staff.



# Norfolk Teacher Training Centre

**Norfolk Teacher Training Centre (NTTC) offers school-based teacher training courses in Primary and Secondary.**

**On completion of the course, successful trainees will have Qualified Teacher Status (QTS) enabling them to work as a teacher in maintained or non-maintained schools in England & Wales.**

## Secondary Teacher Training

We offer training in these subjects:

- Art and Design
- Biology
- Business Studies
- Chemistry
- Citizenship
- Computing
- Design and Technology, including Textiles and Food Technology
- Drama
- English
- Geography
- History
- Mathematics
- Music
- Physical Education
- Physics
- Religious Education
- Social Sciences

## Primary Teacher Training

We also offer Primary teacher training at Early Years Foundation Stage (EYFS), Key Stage 1 (KS1) and Key Stage 2 (KS2). We also offer Primary teacher training with Maths which requires you to hold a suitable Maths related Degree or a Maths A Level.

## School - Direct. Learn from experience

School Centred Initial Teacher Training (SCITT) is ideal for anyone with a passion for teaching and their subject and wants



**98% of graduates**

secure their first teaching job at the end of the course

**80 new teachers**

trained in the last three years

**Rated Good**

by Ofsted and highly ranked in the Good Teacher Training Guide 2017



a substantial element of classroom experience as part of their training. It is the most practical way to gain Qualified Teacher Status in one year. The Norfolk Teacher Training Centre programme is based on an academic year and all trainee teachers receive:

- 120 days in the classroom gaining experience through our Training in School Curricular Programme. This will involve subject knowledge, lesson observation, team teaching, solo-teaching and learning support across at least two key stages. Experience will be divided between at least two of our partner schools and academies.
- A dynamic Professional Development Programme with dedicated off-the-job training experiences, including weekly training sessions, termly conferences, subject knowledge development days and portfolio preparation days.

## Post Graduate Teacher Apprentice (PGTA)

We support the new PGTA. This course is suitable for individuals who have experience of working in schools and have an employer who is able to support apprentices through their training year.

The course follows the same programme as our School Direct courses. However, the programme is slightly longer to allow time for candidates to prepare for their End Point Assessment (EPA) which must be completed as part of the Apprenticeship Standard.

## What's required?

To successfully complete the course, you will be required to:

- Keep a Professional Practice Portfolio providing evidence of personal progress whilst in school. The Portfolio should also contain reflection on academic issues and reading of relevant published educational research.

- Participate fully in the life of your placement schools, keeping a record of your progressive teaching experiences.
- Demonstrate that you have met the Secretary of State's Teachers' Standards.
- As part of the Professional Development Programme, you will also complete three written assignments connecting your school-based experience within the context of pedagogical research.

## Outstanding success

NTTC has over 60 partner schools and academies throughout Norfolk, offering trainees the opportunity to experience teaching in a wide variety of settings.

Every year, over 95% of the trainees who successfully complete our course and gain QTS go on to teaching jobs in schools.

## How to apply

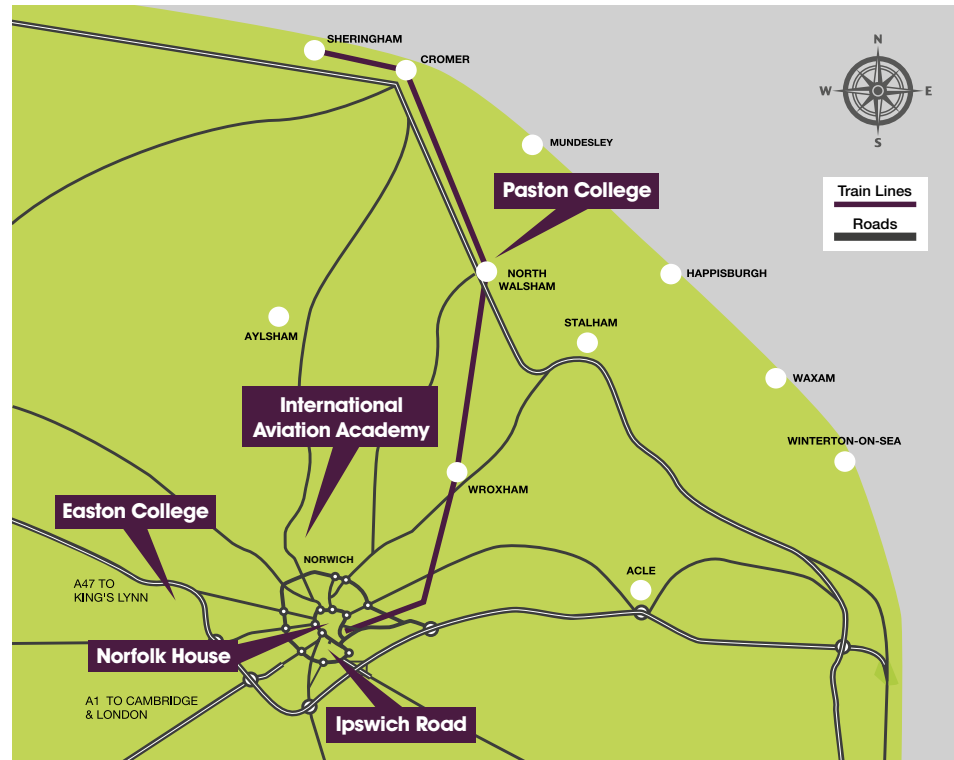
To apply for teacher training with NTTC you need to have a degree, a demonstrable commitment to the subject/age phase you want to teach and a grade C/4 or above in English and Maths (and Science for Primary).

## Generous bursaries

Generous bursaries are available of up to £26,000 depending on the subject you wish to teach through School Direct. The bursary is designed to support you through your training and to make life easy, we apply for the bursary on your behalf, so you don't have to.

Find out more at [norfolkttc.org.uk](http://norfolkttc.org.uk)

# How to find us



## Norfolk House

City College Norwich's School of Higher Education is in the heart of the city centre on Exchange Street.

There is no car parking available, but lots of car parks are located near by. The nearest bus stops are on Castle Meadow, Tombland or Prince of Wales Road.

## Ipswich Road

Our main college campus is located on Ipswich Road approximately 1/2 mile from the City Centre.

Car parking is available and bus stops are located outside the college.

## Easton College

Easton College is located just 8 miles outside of Norwich off the A47.

Car parking is available on campus and the site is well served by direct bus routes and non-direct from Norwich city centre.

## International Aviation Academy Norwich

The Academy is located 4 miles outside of Norwich next to Norwich Airport.

Car parking is available and the nearest bus stop is located 10 minutes' walk away.



## By bus:

Discounted bus passes are available to all College students. Visit [ccn.ac.uk/travel](http://ccn.ac.uk/travel) or [easton.ac.uk/travel](http://easton.ac.uk/travel) for prices and to find out more.

## By train:

The main Norwich Thorpe Train Station is located about 1.5 miles from the College. First Bus and Konectbus operate frequently between the Rail Station and the City Centre which is about an 8-10 minute walk away from St Stephens Street/Red Lion Street. First Counties have regular buses that service the Train Station to Castle Meadow (Blue Line).

For First Buses timetables, visit: [firstgroup.com/norfolk-suffolk](http://firstgroup.com/norfolk-suffolk)

## Park & Ride:

The Park & Ride routes covering the College's Ipswich Road campus are;

- Harford Park & Ride
- Sprowston Park & Ride

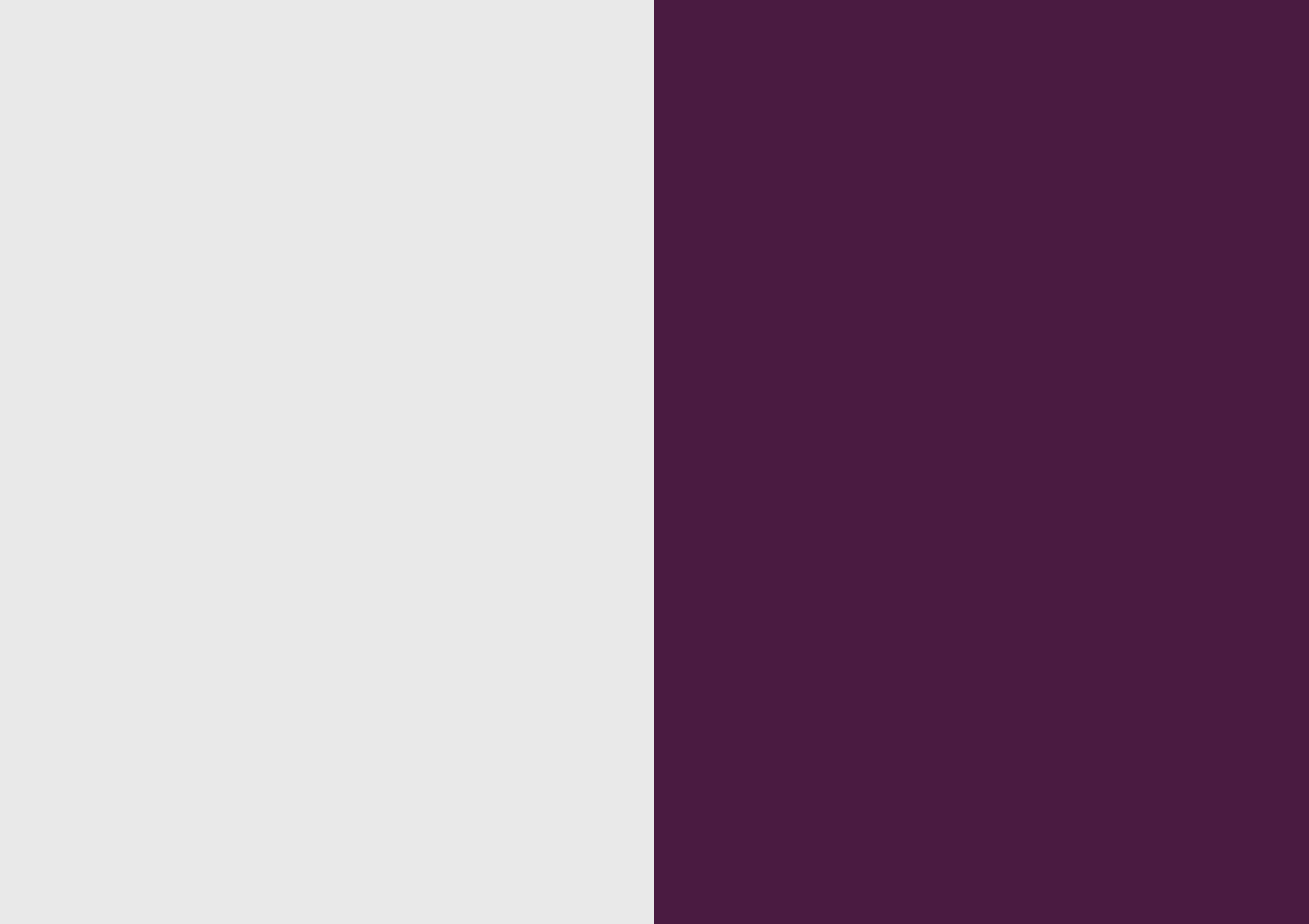
Airport and Thickethorn P&R sites operate to Newmarket Road/Town Close Road which is a 5 minute walk. Postwick P&R operates to St Stephens Street in the city centre which is an 8 minute walk.

Routes run Monday to Saturday with arrivals in the city before 7am and last buses back at approximately 7pm depending on the site. A 16-19 (no ID required!) day ticket is £1.80 and a 10 day ticket is £14. More fares and times information is available at [norwichparkandride.co.uk](http://norwichparkandride.co.uk)

## Got a question about travel?

Get in touch with the Travel Plan Co-ordinator at [citytravel@ccn.ac.uk](mailto:citytravel@ccn.ac.uk) or **01603 773 607**





**Degree & Higher Education Prospectus**

Norfolk House  
Exchange Street  
Norwich  
NR2 1DD

t: +44 (0)1603 773810  
e: [information@ccn.ac.uk](mailto:information@ccn.ac.uk)

**[www.ccn.ac.uk/degrees](http://www.ccn.ac.uk/degrees)**

**ten**group  
.....  
transforming education in norfolk